



Slide 1

North Carolina Cancer Prevention and Control Branch
N.C. Comprehensive Cancer Control Program

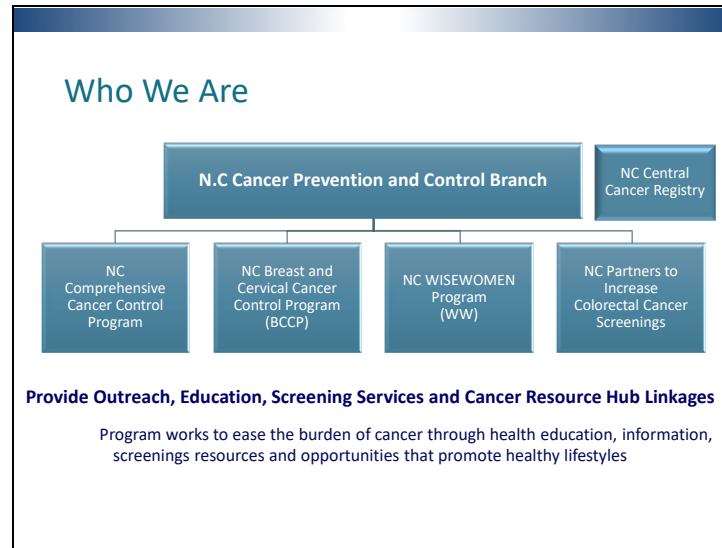


Comprehensive
Cancer Control
Collaborating to Conquer Cancer
NORTH CAROLINA

Provider Trainings 2021
N.C. Breast and Cervical Cancer Control Program

Working together to achieve healthier communities and reduce the cancer burdens.

Slide 2



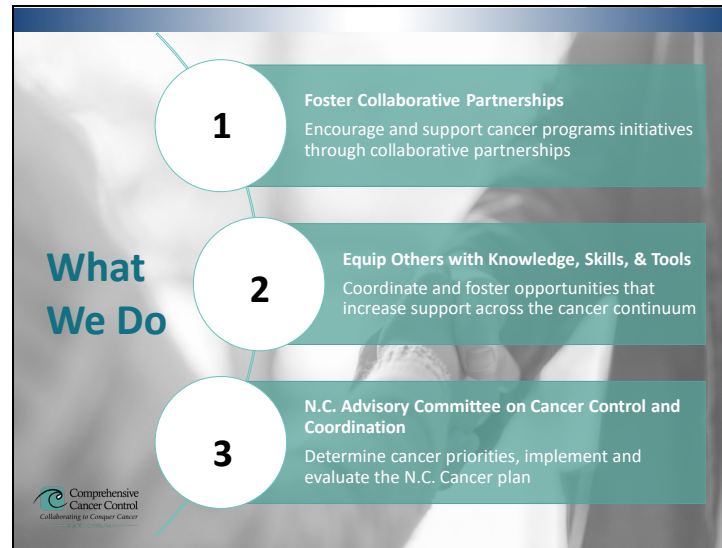
The Cancer Prevention and Control Branch (Cancer Branch) is in the N.C. Department of Health and Human Services family, in the N.C. Division of Public Health's Chronic Disease and Injury Section.

There are four key programs in the Cancer Branch: Comprehensive Cancer Control Program, Breast and Cervical Cancer Control Program, the WISEWOMAN Project and our newest program NC Partners to Increase Colorectal Cancer Screenings (NC PICCS).

The Cancer Branch Supports **Provide Outreach, Education, Screening Services and Cancer Resource Hub Linkages**. The Programs work to ease the burden of cancer through health education, information, screenings resources and opportunities that promote healthy lifestyles

The Cancer Branch through the N.C. State Comprehensive Cancer Control Plan (N.C. Cancer Plan) works to ensure a comprehensive and collaborative approach to address the state's cancer burden. The N.C. Cancer Plan focuses on six priority cancers that cause the most burden in the community, and uses methods that have worked in similar states to prevent and control these cancers. N.C. Cancer Prevention and Control Branch provides outreach, education and screening services.

Slide 3

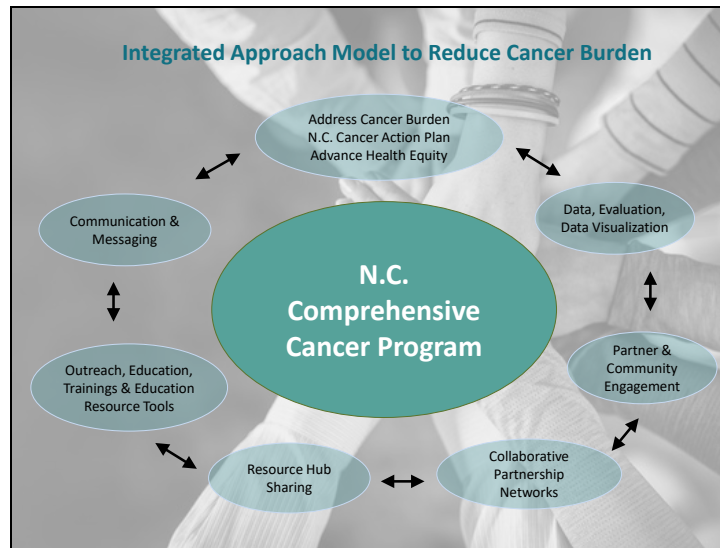


Comprehensive Cancer Control Program Goal: To equip others with the knowledge, skills, and tools to promote health through the cancer continuum to reduce the cancer burden in N.C. Our program takes a more global approach by working with statewide and local partners to address cancer through system changes, collaborations, and educational and awareness campaigns.

How we do it:

- ⑩ Work to encourage and support cancer programs and initiatives through collaborative partnership
 - ✓ Promote healthy lifestyles and early detection
 - ✓ Educate about symptoms and risk factors
 - ✓ Increase access to care and treatment
 - ✓ Enhance survivors' quality of life
- ⑩ Coordinate and foster opportunities that increase support for prevention, early detection, care and treatment, survivorship of cancer and health equity
 - ✓ Outreach, education and training
 - ✓ Communication and public awareness
 - ✓ Community engagement and partnerships
 - ✓ Connections to resources that increase support for programs and services
 - ✓ Data, evaluation and surveillance
 - ✓ Consultation and technical assistance
- ⑩ Work with many partner groups like the N.C. Advisory Committee on Cancer Coordination and Control
 - ✓ Provide evidence-based strategies and a framework to reduce the burden of cancer
 - ✓ Outline a plan for action for cancer programs, community organizations, policy makers, and North Carolinians

Slide 4



As seen here, the N.C. Comprehensive Cancer Control Program takes an integrated approach for cancer prevention and control that promotes early detection/screenings and increase access to care as well as resource and support services to address the burden of cancer.

Starting at the top of the circle with Addressing Cancer Burden this process includes (but not limited to):

- 1) Developing, building, and nurturing partnerships and partnership networks
- 2) Using data visualization to tell the story about the needs, barriers etc. to strategically prioritize targeted areas, efforts and maximize resources
- 3) Engaging partners and communities in the integrated approach process
- 4) Coordinating and fostering education and training opportunities to equip others for sustainability
- 5) Facilitating resource sharing, community, and clinical linkages among the partner networks to help reduce barriers and leverage resources
- 6) Using a health equity lens to help address social determinants of health, reduce disconnects through collaborative partnerships and resource sharing.

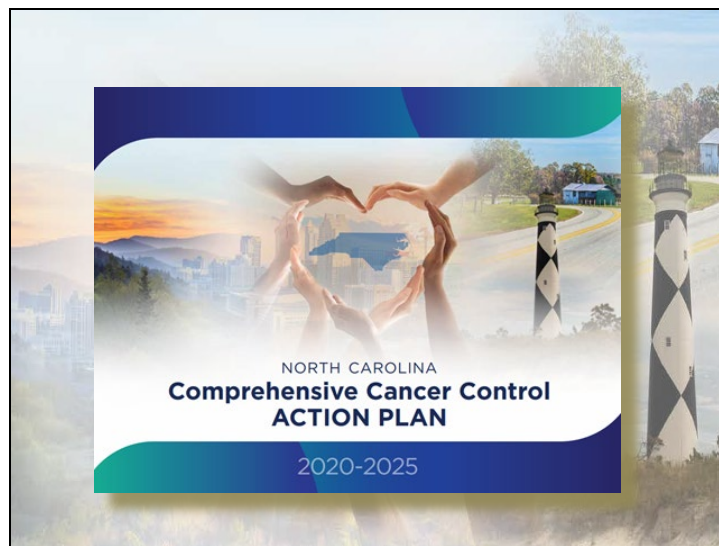
The Comprehensive Cancer Team are not the only ones doing this work, but it's how we work in tandem with our partners to accomplish this work.

Slide 5



Comprehensive Cancer Control Program works with providers and partners like yourself to make community and clinical linkages. Connecting patients, survivors, clinics, clinicians, & community resources.

Slide 6



Request your copy of the NC Cancer Action Plan today!

The NC Comprehensive Cancer Control Action Plan or the Cancer Plan is a framework for action to reduce the burden of cancer, it identifies cancer challenges and issues that affect North Carolinians. The Cancer plan offers goals and strategic actions supported by evidence-based interventions and current cancer information.

This new cancer plan, which was unveiled in November of last year builds on the successes from the previous cancer plan. It is designed to outline a plan of action for cancer programs, community organizations, policy makers and individual North Carolinians.

Slide 7



The NC Cancer Action Plan is organized into two major sections: Action Priorities and Priority Cancer. We also included a Call to Action within the Cancer Plan.

The Action Priorities section has information on cancer risk factors and healthy behaviors, policies and environmental changes that can reduce a North Carolinians risk.

The Cancer plan focuses on six priority cancers: Lung, female Breast, colorectal, prostate, cervical and melanoma and non-melanoma skin cancer.

The four most deadly cancers in North Carolina are lung, colorectal, breast and prostate.

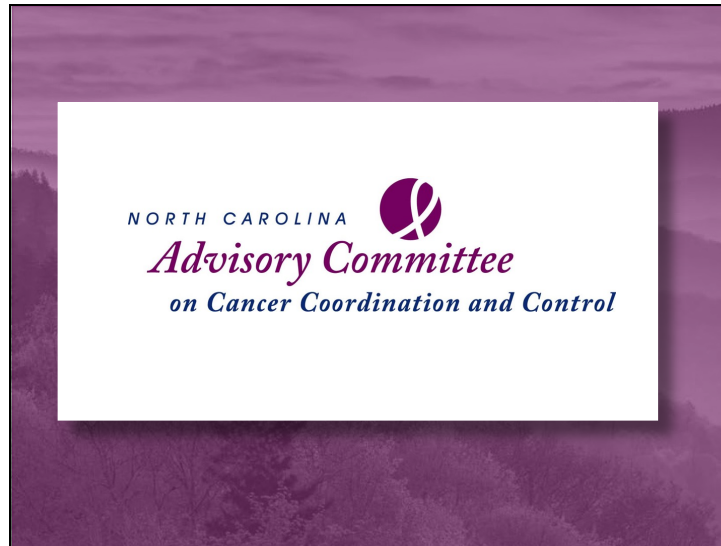
- Lung cancer is the leading cause of cancer deaths...more than 5,000 people died in 2018.
- Colorectal cancer is the second leading cause of cancer deaths...more than 1,500 people died in 2018.
- Breast cancer is the 3rd leading cause of cancer deaths in women...nearly 1,400 women died in 2018.
- Prostate cancer is the fifth leading cause of cancer deaths in men...nearly 1,000 men died in 2018.

Two of the priority cancers that are commonly preventable and addressed in the N.C. Cancer Plan include cervical cancer and melanoma skin cancer. Some forms of cervical cancer are easily detected through Pap test while other forms are preventable through use of a vaccine. Melanoma skin cancer can be prevented by practicing sun-safe behaviors.

The priority cancers section emphasizes six priority cancers which were selected because they are preventable through screening and HPV vaccination. Our six priority cancers are:

Lastly, what's a plan without anything actionable? In the Cancer Plan we included a Call to Action that includes evidence-based strategies and actions that business, schools, individuals, community organizations and health care professionals can take to help reduce the cancer burden in NC.

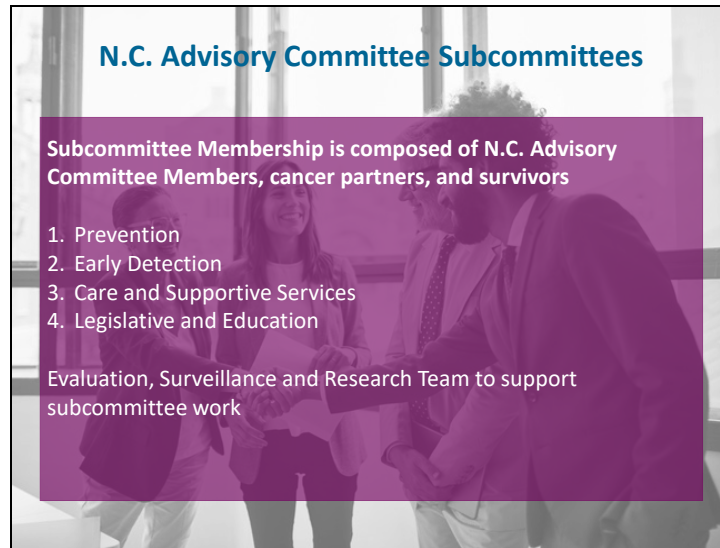
Slide 8



Comprehensive cancer control is an approach that brings together key partners and organizations to assess and help reduce the burden of cancer in communities.

The North Carolina Comprehensive Cancer Program (NCCCP) focuses on reducing the incidence, morbidity, and mortality of cancer through primary prevention, early detection and treatment, policy and environmental change to guide sustainable cancer control. We are looking at the whole cancer continuum from prevention to end of life. We engage and work with large partner networks the largest one being the N.C. Advisory Committee on Cancer Coordination and Control.

Slide 9



Get Involved! Be active in partner networks with us. Your input matters.

Comp Cancer works with the NC Advisory Committee on Cancer Coordination and Control (ACCCC) to determine North Carolina's cancer priorities, reduce the incidence and death rates of cancer in NC, adopt and evaluate NC Cancer Plan strategies to equip others to action on cancer health disparities, structural barriers and access to care.

The mission of the Advisory Committee: is to facilitate the reduction of cancer incidence and mortality for all North Carolinians, enhance statewide access to quality treatment and support services, and maximize quality of life for all North Carolina cancer survivors, patients, and their loved ones through educating and advising government officials, policy makers, public and private organizations, and the public.

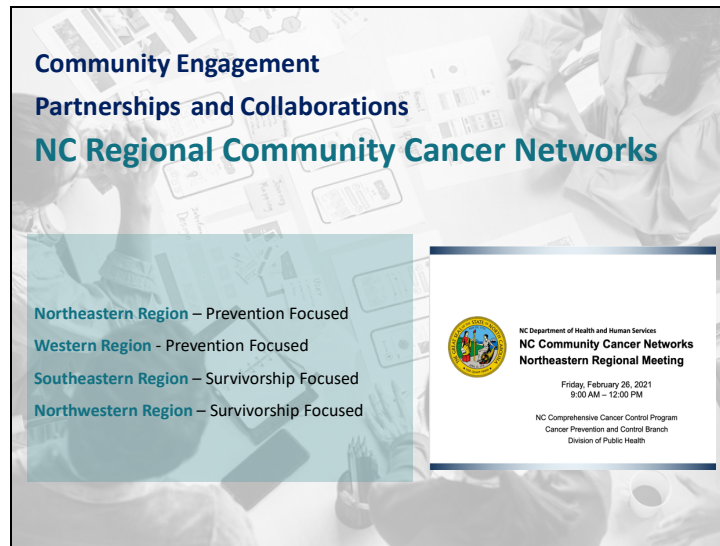
The Advisory Committee is comprised of a 34 appointed member seat and partners. The members are appointed by the Governor of NC and NC House of Representatives and NC Senate. Additionally, we have traditional and non-traditional partners from across NC.

The Advisory Committee has 5 subcommittees:

- Prevention
- Early Detection
- Care and Supportive Services
- Legislative and Education

The evaluation, surveillance and research team supports the subcommittees' work.

Slide 10



NC CCNs a Network Resource Hub for YOU!! Join a network near you and get connected to resources.

The NC Regional Community Cancer Networks (CCNs) are groups of traditional and non-traditional partners that come together with the goal of reducing barriers and increasing access to care and support services in their communities. Traditional partners are those that provide health services, and non-traditional partners are those that provide resources, support services or have the people that need them.

The CCNs are currently in 4 regions across NC: Northeastern, Western, Southeastern, and Northwestern. With either a Cancer Prevention focus or a survivorship focus

NC CCNs determine the overlaps and gaps in services in their regions and work to fill those gaps through partnership, advocacy and resource sharing. The Vision of the CCNs: Connecting communities for a cancer free North Carolina. We hope through the connection of partners and resources we can continue to work towards a cancer free NC.

Think of them as a regional resource hub.

Slide 11



FREE* Provider and Community Trainings and resources through Partnerships!

The N.C. Comprehensive Cancer Control Program works to encourage and support cancer programs and initiatives through collaborative partnerships that:

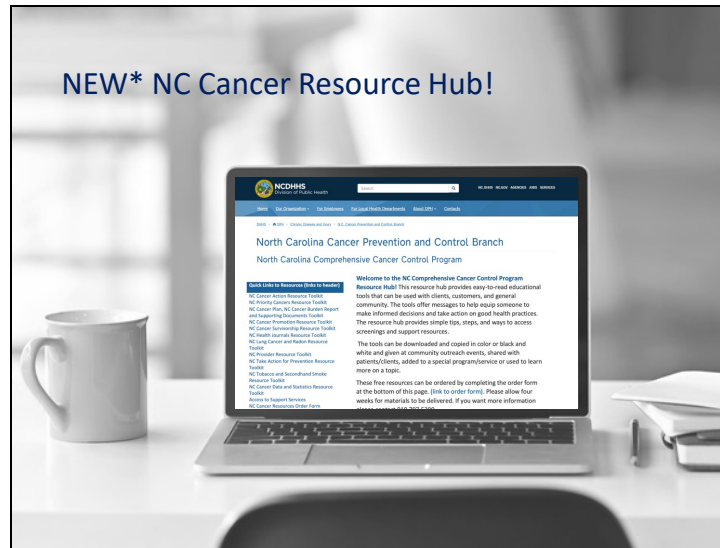
- Promote healthy lifestyles and early detection of cancer
- Educate about cancer symptoms and risk factors
- Increase access to care and treatment of cancer
- Enhance cancer survivors' quality of life

We engage partners in multiple ways, using a multi-pronged approach.

Through our numerous partnerships and collaborations we have been able to enhance the work

- Provide Education Lung Cancer Resource Toolkit which provides an update on the current Lung Cancer guidelines as well as resources and strategies to help you better serve your patients and communities.
- PSE Change with Expanded Food and Nutrition Education Program. Adopted the NC Cancer Plan Prevention Messaging and incorporated the My Health Action Plan into their curriculum
- Radon Fact Sheet: Institutionalized the use of the Safe at Home Preventing Lung Cancer by Reducing Radon in the Home fact sheet within the NC Realtors Association.
- Provider Education Colorectal Cancer Enduring Materials: Provides colorectal cancer basics and screening recommendations.

Slide 12

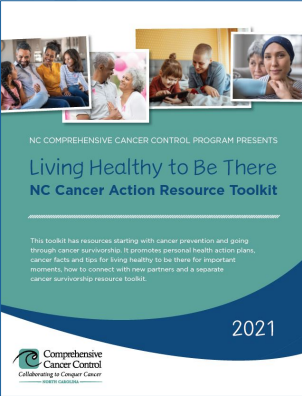


Coming Soon! The NC Comprehensive Cancer Control Program Resource Hub! This resource hub provides easy-to-read educational tools that can be used with clients, customers, and general community. The tools offer messages to help equip someone to make informed decisions and take action on good health practices. The resource hub provides simple tips, steps, and ways to access screenings and support resources.

The tools can be downloaded and copied in color or black and white and given at community outreach events, shared with patients/clients, added to a special program/service or used to learn more on a topic.

These free resources can be ordered by completing the order form at the bottom of this page. Please allow four weeks for materials to be delivered. If you want more information please contact 919.707.5300.

Slide 13



NEW* Live Healthy to Be There Toolkit

Includes:

- NC Comprehensive Cancer Action Plan 2020-2025
- Priority Cancer Fact Sheets
- Cancer Data and Statistics
- Provider Resources
- Promotional Tools
- Cancer Survivorship Resources
- and Much More!

The Living Healthy to Be There NC Cancer Action Resource Toolkit has resources starting with cancer prevention and going through cancer survivorship. It promotes personal health action plans, survivorship care plans, cancer facts and tips for living healthy to be there for important moments.

It also includes The North Carolina Comprehensive Cancer Control ACTION Plan, cancer data and statistics, provider resources, promotional tools, cancer survivorship resources, steps on how to connect with new partners and much more.

All of our resources are free to use and will be available to download or order through our website.

Slide 14



The N.C. Comprehensive Cancer Control Program works to encourage and support cancer programs and initiatives through collaborative partnerships that:


- Promote healthy lifestyles and early detection of cancer
- Educate about cancer symptoms and risk factors
- Increase access to care and treatment of cancer
- Enhance cancer survivors' quality of life

We are here to work with you. We can assist you.

- Provide consultation and technical assistance
- Link partners and resources – statewide and local
- Provide webinars and other educational opportunities
- Develop awareness materials and campaigns
- Provide educational materials
- Connect you to data
- Partner to work on policy, system, and environmental change

Let us know how we can work with you to reduce chronic disease and specifically cancer in North Carolina. We want to be your partner.

Slide 15



Contact Us!

NC Comprehensive Cancer Control Program
Phone: (919) 707-5300
Email:
Website:
<https://publichealth.nc.gov/chronicdiseaseandinjury/cancerpreventionandcontrol/index.htm>