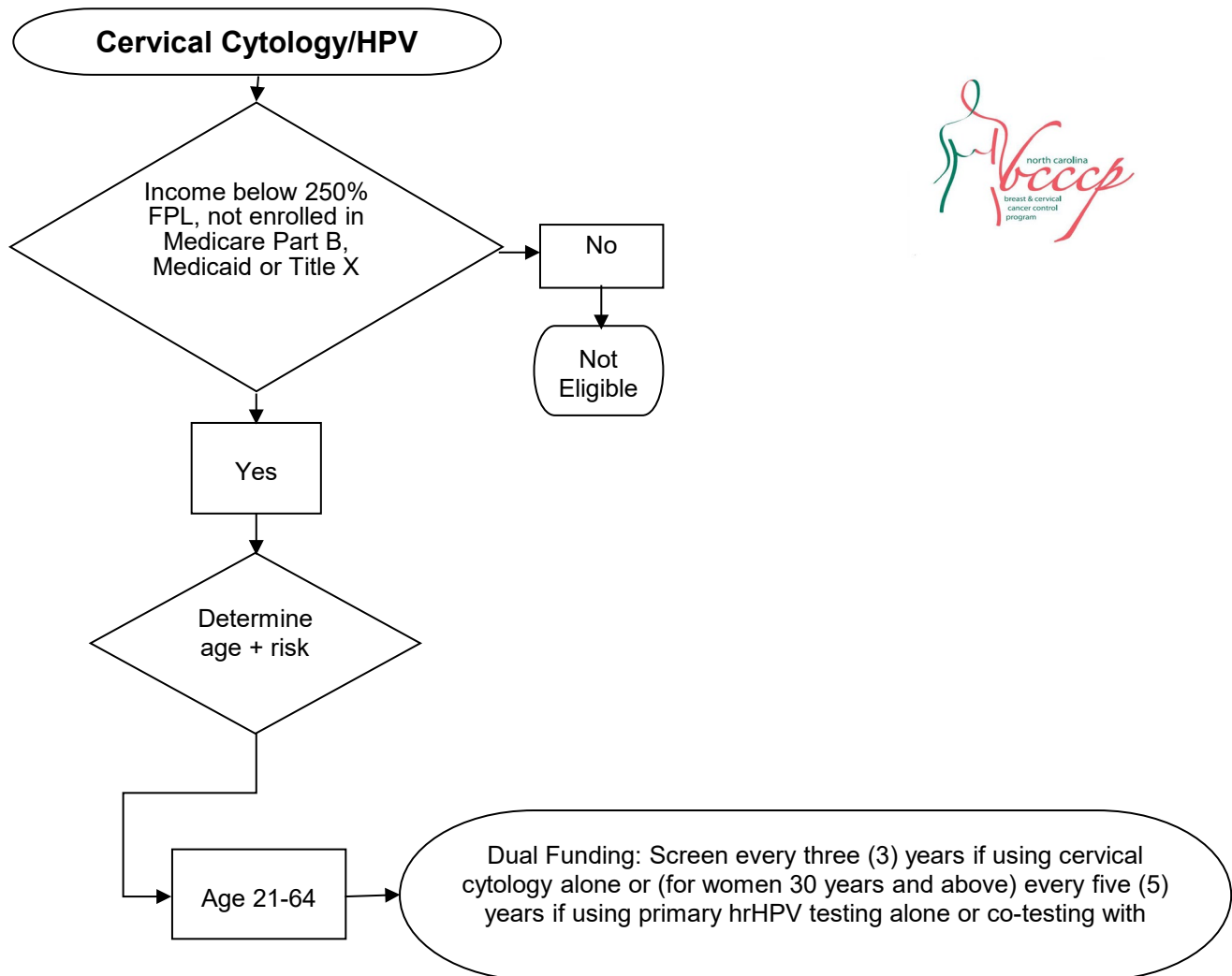


## NC BCCCP Eligibility Flow Chart Cervical Screening



**Note:** The priority population for NC BCCCP cervical cancer screening services is women between the ages of 21 and 64 who have low-incomes (below 250% of federal poverty level), who have never been screened or have not been screened within the last 10 years, and who have no other source of health-care reimbursement, such as insurance. Recruitment efforts should be concentrated on this population. At least 35% of all newly-enrolled women screened for cervical cancer will have never been screened or not screened within the last 10 years.

Women who have had a hysterectomy for CIN disease should undergo cervical cancer screening for 20 years, even if it goes past the age of 65. If a woman over 64 needs to be screened and is eligible to receive Medicare benefits, she should be encouraged to enroll. Women enrolled in Medicare Part B are not eligible for the NC BCCCP clinical services. However, women who are eligible for Medicare Part B but have low incomes (below 250% of the federal poverty level) and cannot pay the premium to enroll in Medicare part B are eligible to receive services through the NC BCCCP.

\*Women determined to be high-risk for cervical cancer should be screened more frequently.